



CorePro LED PLT 4P



CorePro LED PLT HF 9W 840 4P GX24q-3

The CorePro LED PLT 4P integrates a LED light source into a traditional fluorescent form factor. This product is the ideal solution for uplampping in general lighting applications: it meets basic lighting requirements, offers significant energy savings, and is environmentally friendly

Product data

General Information	
Cap-Base	GX24q-3
Nominal lifetime	30,000 hour(s)
Switching Cycle	200,000
Lighting Technology	LED
Flux measurement reference	Sphere
CE mark	Yes
EU RoHS compliant	Yes

Light Technical	
Color Code	840 [CCT of 4000K]
Beam Angle (Nom)	120 degree(s)
Luminous Flux	1,100 lm
Color Designation	Cool White (CW)
Correlated Color Temperature (Nom)	4000 K
Luminous Efficacy (rated) (Nom)	122 lm/W
Color Consistency	<6
Color rendering index (CRI)	82
LLMF At End Of Nominal Lifetime (Nom)	70 %
Photobiological safety according to EN 62471	RG1

Operating and Electrical	
Line Frequency	20K-80K Hz

Input Frequency	20K-80K Hz
Power Consumption	9 W
Lamp Current (Max)	400 mA
Lamp Current (Min)	250 mA
Starting Time (Nom)	0.5 s
Warm-up time to 60% light	0.5 s
Power Factor (Fraction)	0.9
Voltage (Nom)	20-60 V
LED alternative to fluorescent lamp power	26 W
Inrush current at mains	-
Max. lamp no. on MCB B type 10A - Mains	-
Max. lamp no. on MCB B type 10A – EM ballast without Comp. Cap.	-
Max. lamp no. on MCB B type 10A – EM ballast with Comp. Cap.	-
Max. lamp no. on MCB B type 16A - Mains	-
Max. lamp no. on MCB B type 16A – EM ballast without Comp. Cap.	-
Max. lamp no. on MCB B type 16A – EM ballast with Comp. Cap.	-
Ballast Compatibility	HF

CorePro LED PLT 4P

Temperature

Ambient temperature range	-20 °C to 35 °C
T-Case Maximum (Nom)	65 °C

Controls and Dimming

Dimmable	No
----------	----

Mechanical and Housing

Bulb Finish	Frosted
Bulb Material	Plastic
Product Length	100 mm
Bulb Shape	PL-T

Approval and Application

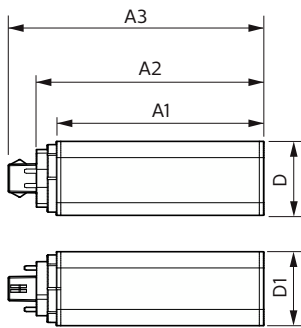
Energy Efficiency Class	E
Energy Saving Product	Yes
Approval Marks	RoHS compliance TUV CE marking KEMA Keur certificate

Energy Consumption kWh/1000 h	9 kWh
EPREL Registration Number	1361423

Product Data

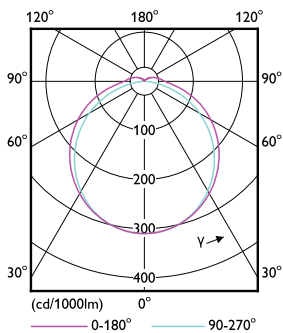
Order product name	CorePro LED PLT HF 9W 840 4P GX24q-3
Full product name	CorePro LED PLT HF 9W 840 4P GX24q-3
Full product code	871951448782600
Order code	929003576602
Material Nr. (12NC)	929003576602
Numerator - Quantity Per Pack	1
EAN/UPC - Product/Case	8719514487826
Numerator - Packs per outer box	20
EAN/UPC - Case	8719514487833

Dimensional drawing

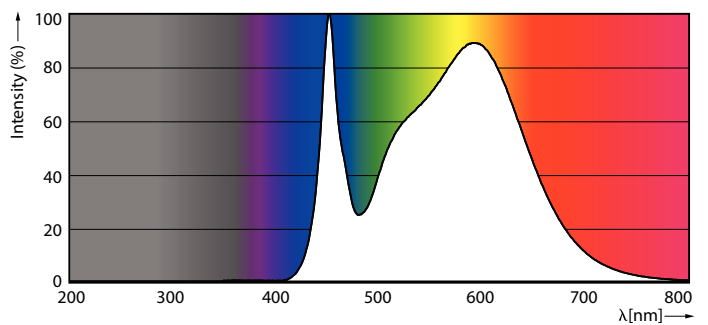


Product	D1	D2	A1	A2	A3
CorePro LED PLT HF 9W 840 4P GX24q-3	42 mm		115 mm	127 mm	142 mm

Photometric data



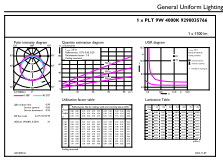
Light Distribution Diagram - CorePro LED PLT HF 9W 840 4P GX24q-3



Spectral Power Distribution Colour - CorePro LED PLT HF 9W 840 4P GX24q-3

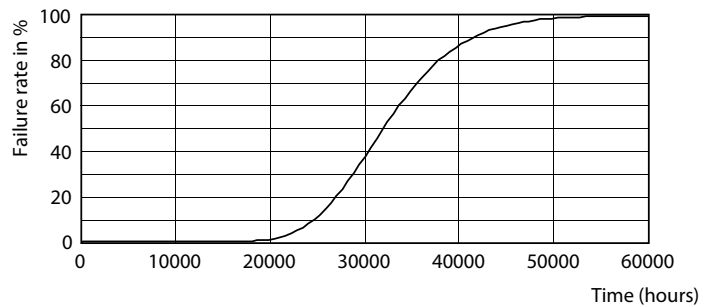
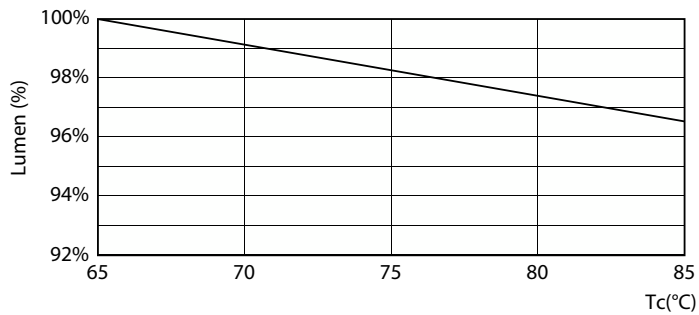
CorePro LED PLT 4P

Photometric data



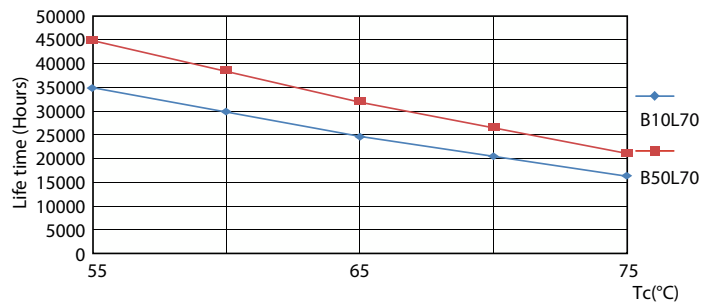
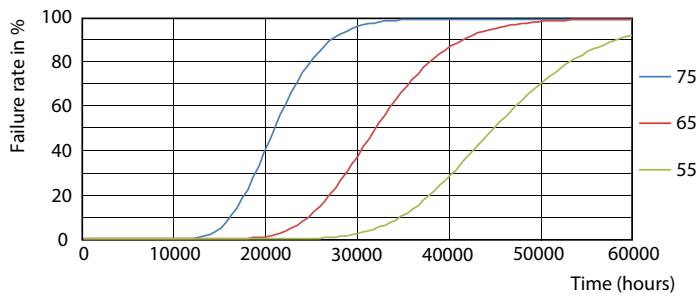
General uniform lighting - CorePro LED PLT HF 9W 840 4P GX24q-3

Lifetime



Lumen Maintenance Diagram - CorePro LED PLT HF 9W 840 4P GX24q-3

Life Expectancy Diagram - CorePro LED PLT HF 9W 840 4P GX24q-3

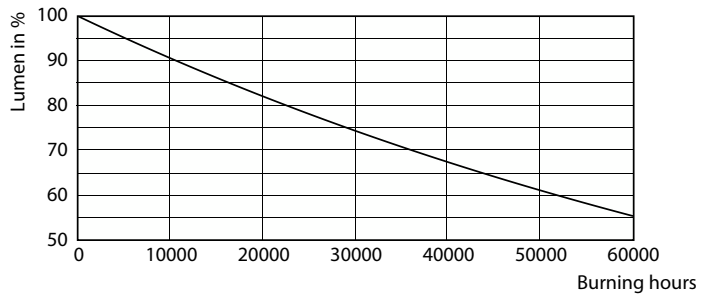


Life Expectancy Diagram - CorePro LED PLT HF 9W 840 4P GX24q-3

Life Expectancy Diagram - CorePro LED PLT HF 9W 840 4P GX24q-3

CorePro LED PLT 4P

Lifetime



Lumen Maintenance Diagram - CorePro LED PLT HF 9W 840 4P GX24q-3

